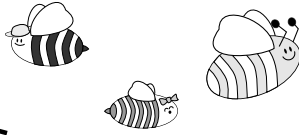


The Letter b

..... Join the letter b's together



how many bees
can you find?


The maze contains the following letters in various positions:

- Top row: d, b, a
- Second row: a, d, b, d
- Third row: b, c, b
- Fourth row: a, a, c, b
- Fifth row: b, a, d, b
- Sixth row: d, b, c
- Bottom row: d, b, b, c

Small bee icons are scattered throughout the maze, including one on the letter 'a' in the second row, one on the letter 'c' in the third row, one on the letter 'a' in the fourth row, one on the letter 'd' in the fifth row, one on the letter 'c' in the sixth row, and one on the letter 'c' in the bottom row.